



Horse Colors

Presented By: EquiCenter

Bay

Characteristics:

~ Brown body

~ Black mane and tail

~ Black points (knees, ears, hocks)



Chestnut

Characteristics:

~ Reddish brown to orange brown
body

~ Brown mane and tail



Grey

Characteristics:

~ White to dark grey

~ Most have black skin

~ Coat can be black to bay when born,
then fades with age



Pinto/Paint

Characteristics:

~ White and brown, white and black
or white, brown and black over large
patches of the entire body



Black

Characteristics:

~ Black body

~ Black mane and tail

~ Black nose



Dark Brown

Characteristics:

~ Dark brown body

~ Mane can be almost black

~ Brown nose



Dun

Characteristics:

~ Tan colored body

~ Black mane and tail

~ Black dorsal stripe down back

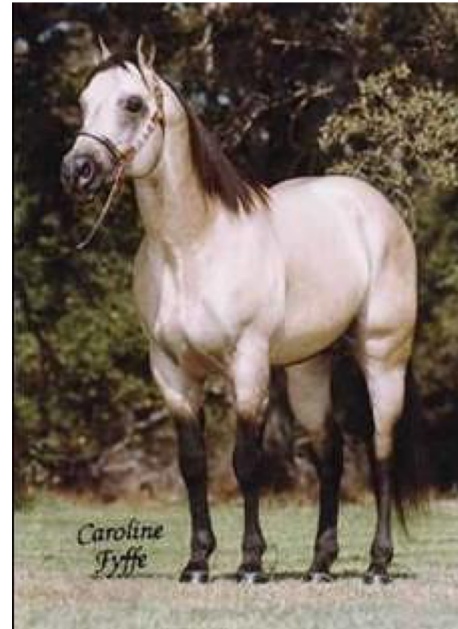


Buckskin

Characteristics:

~ Tan colored body

~ Mane can be black



Appaloosa - Leopard

Characteristics:

~ Spotted all over

~ Black spots on white body



Appaloosa - Blanket

Characteristics:

~ Most of the body is a dark color
with white patch on hind end that is
spotted



Roan

Characteristics:

- ~ Coat is a mixture of white and colored hair
- ~ Do not fade in color as they age



Strawberry or Red Roan

Characteristics:

~Chestnut base coat with white
throughout

~ Red mane and tail



Bay Roan

Characteristics:

~ Bay coat with white hair throughout

~ Black mane and tail

